





## 9 Winslow Street, Openshaw, Manchester, M11 2AY

Jordan Fishwick are pleased to offer this TWO BEDROOM mid terrace property located in Openshaw, M11. The house is well located, just a 10 minute drive from central Manchester. It has recently been redecorated but does need the new owner to inject some personality and love with new flooring and few other minor jobs. The house briefly comprises of: vestibule, two reception rooms, separate kitchen leading to yard. First floor, 2 bedrooms and a family bathroom. You will find an ample amount of on street parking to the front of the house. LONG LEASEHOLD.

# Price £115,000

### Viewing arrangements

Viewing strictly by appointment through the agent  
245 Deansgate, Manchester, M3 4EN 0161 833 9499 opt 3

#### Entrance Hall/Vestibule

#### Reception Room 1

12'2" x 9'2"

Radiator. Ceiling light.

#### Reception Room 2

13'10" x 12'1"

Radiator. Ceiling light.

#### Kitchen

Range of wall and base units with worktops over. Sink with mixer tap. Cooker with hob over. Combi boiler. Radiator. Ceiling light. Access to yard.

#### Bedroom 1

14'3" x 12'2"

Radiator. Ceiling light.

#### Bedroom 2

12'2" x 7'3"

Radiator. Ceiling light.

#### Bathroom

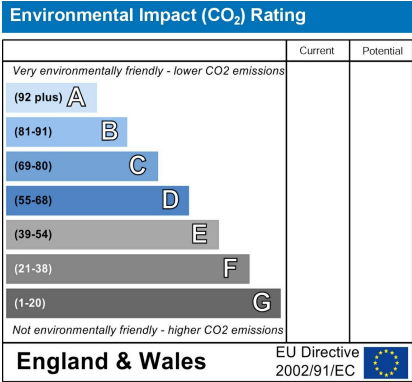
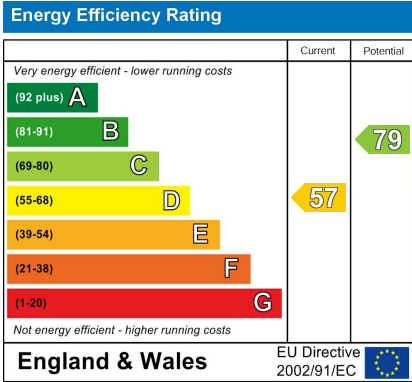
Bath with mixer shower over. Sink with mixer tap. Low level W/C.

#### Externally

Yard to rear. Unrestricted on street parking to the front.

#### Additional Information

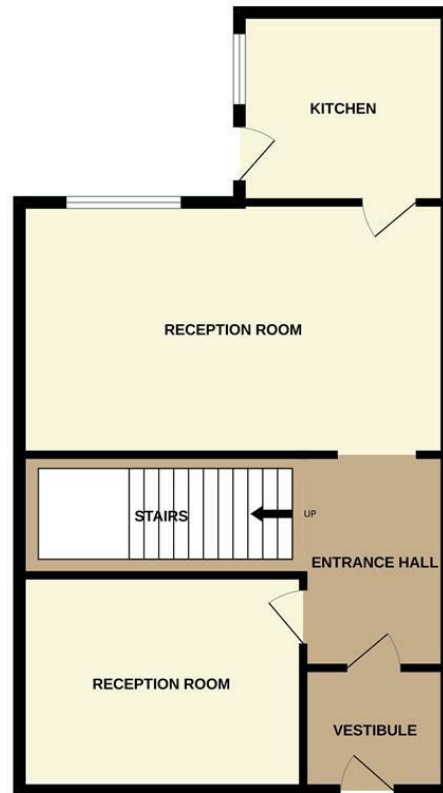
Lease - 900 years from 3 June 1982  
Council Tax Band A







GROUND FLOOR



1ST FLOOR



Measurements are approximate. Not to scale. Illustrative purposes only.  
Made with Metropix ©2024



These particulars are believed to be accurate but they are not guaranteed and do not form a contract. Neither Jordan Fishwick nor the vendor or lessor accept any responsibility in respect of these particulars, which are not intended to be statements or representations of fact and any intending purchaser or lessee must satisfy himself by inspection or otherwise as to the correctness of each of the statements contained in these particulars. Any floorplans on this brochure are for illustrative purposes only and are not necessarily to scale.

Offices at: Chorlton, Didsbury, Disley, Hale, Glossop, Macclesfield, Manchester Deansgate, Manchester Whitworth Street, New Mills, Sale, Wilmslow and Withington

245 Deansgate, Manchester, M3 4EN

0161 833 9499 opt 3

[manchester@jordanfishwick.co.uk](mailto:manchester@jordanfishwick.co.uk)

[www.jordanfishwick.co.uk](http://www.jordanfishwick.co.uk)

